

JOURNEYS: THE HEALING ARTS

In partnership with Chelsea and Westminster Hospital NHS Foundation Trust (CW+)

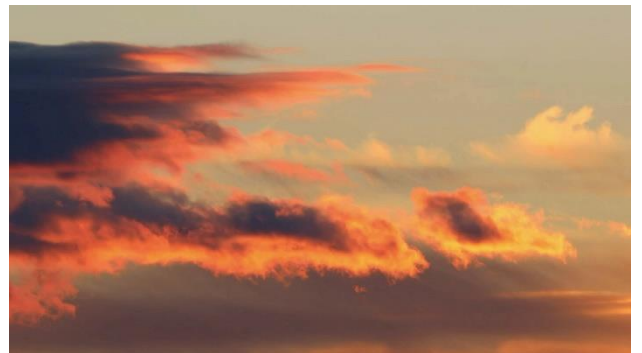
24 November 2021 – 13 January 2022

Press Images Caption Sheet, as of November 22, 2021

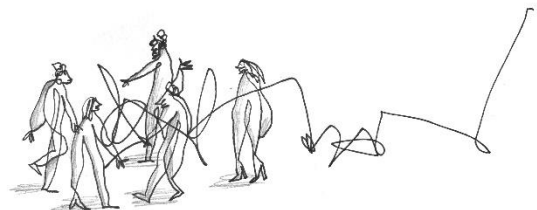
1.



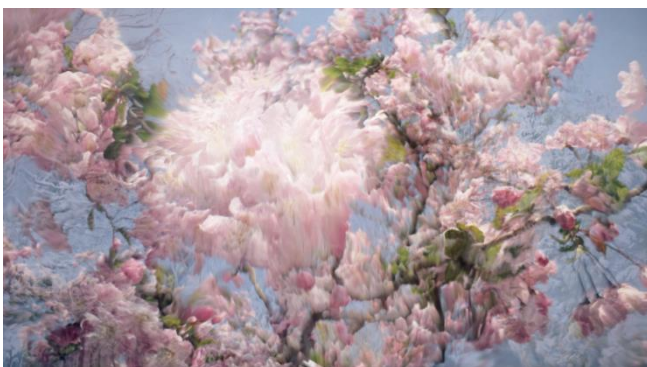
3.



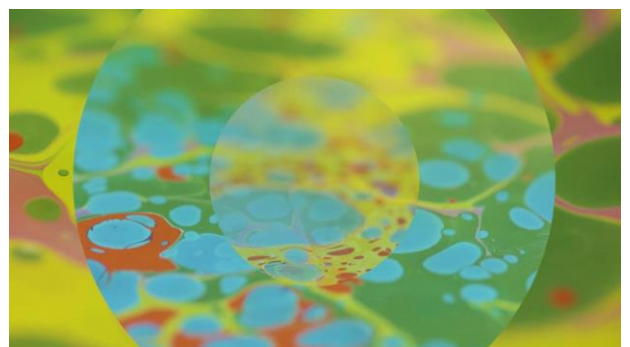
4.



2.



5.



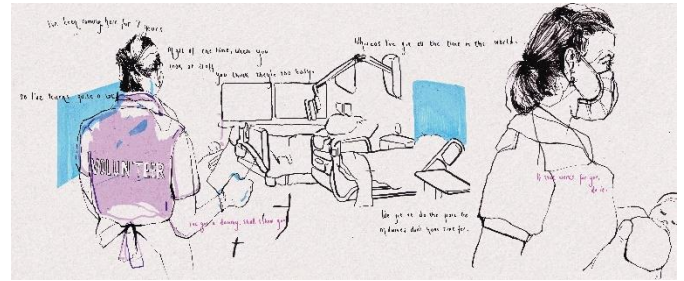
**SAATCHI
GALLERY**



6.



8.



7.



9.



Exhibition Credit Line:

'Journeys: The Healing Arts' (in partnership with CW+) at Saatchi Gallery opens from 24 November 2021 until 13 January 2022. Admission is free.'

Artwork image captions (L-R: Top to Bottom)

1. *Reportage, 2021* by Tim King. Drawings on mixed media.
2. *Seasonal (RELAX Digital)* by Morgan Beringer. Digital film.
3. *Stateless Studios – Circadian Cycles* by David Erskine. Digital film.
4. *Best For You, 2021* by Carlos Penalver. Live drawing, painting on wall.
5. *Favourite Colour, 2016 (RELAX Digital)* by Eda Sarman. Digital film.
6. *Project Willow, 2019-21* by James Hope-Falkner. Digital film projection.
7. *Synchronicity, 2021 (RELAX Digital)* by Paola Estrella. Digital film.
8. *That's what we're here for, 2021* by Emily Thomas. Giclee prints.
9. *Midlands, 2021* by Brian Eno. Digital Film.

These images are for press and educational use only in relation to the touring exhibition listed above; they must be identified and accompanied by the appropriate caption, in particular each **image's credit line with credit to the artist**. All images are to be reproduced in entirety, without cropping or overprinting. If using images on the Web, image should be resized and posted at no larger than 800 pixels on the longest side.

For any press-related enquiries:

Helena Zeidler: 44 (0) 20 7811 3091 | helena@saatchigallery.com